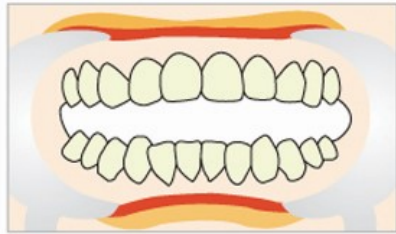
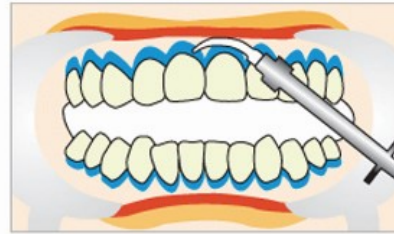


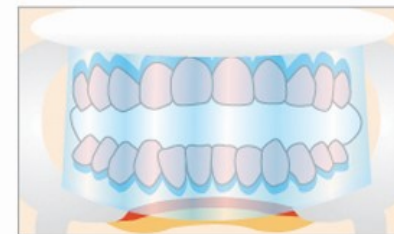
1. Clean the teeth



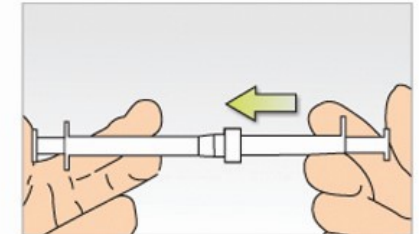
2. Place cheek retractor



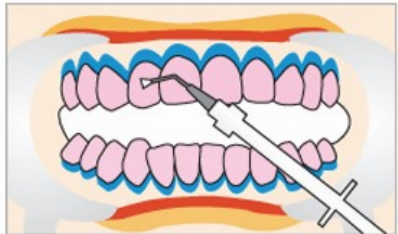
3. Apply gum-protector



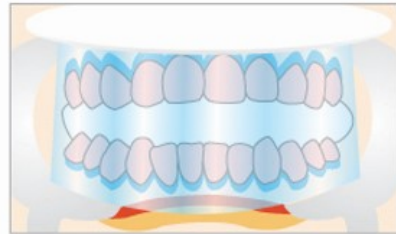
4. Cure 3-4 minutes



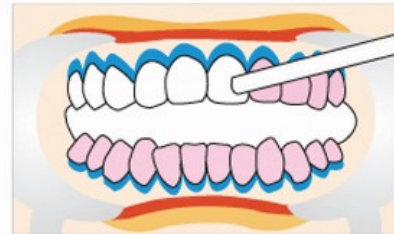
5. Connect the syringes and mix the gel



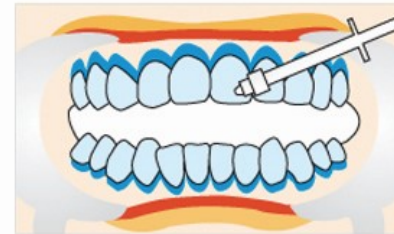
6. Apply teeth whitening gel



7. Apply LED light (15 minutes)



8. Remove the gel and repeat 6 & 7 for 2 more times to complete the treatment



9. Apply desensitizer